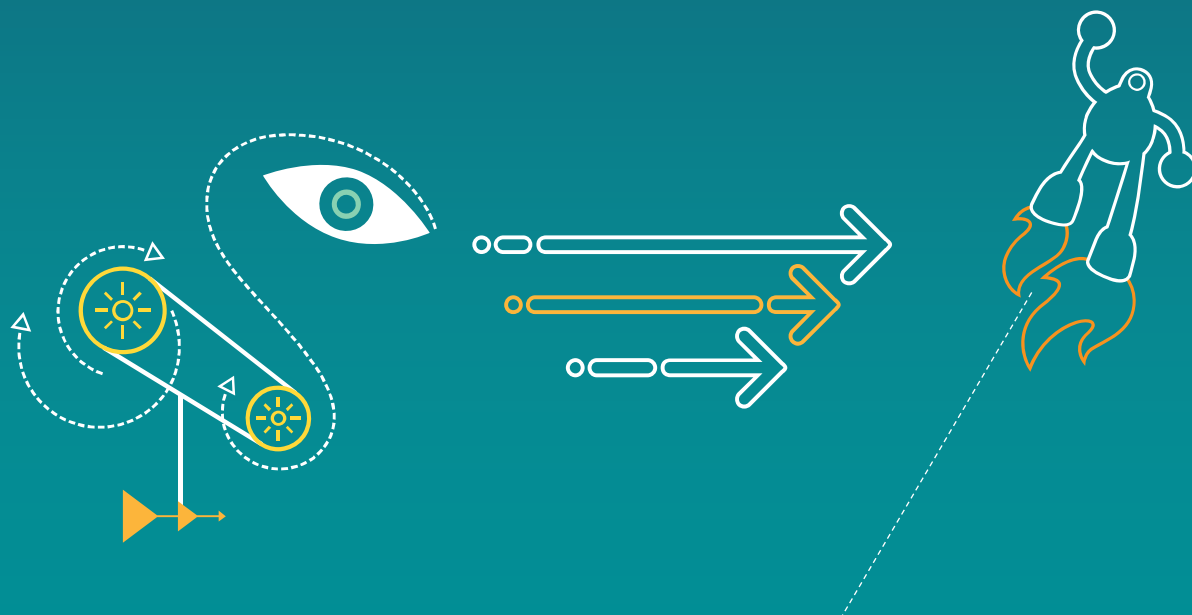




Steven Ouellette
Sr Director, Engineering Learning & Development

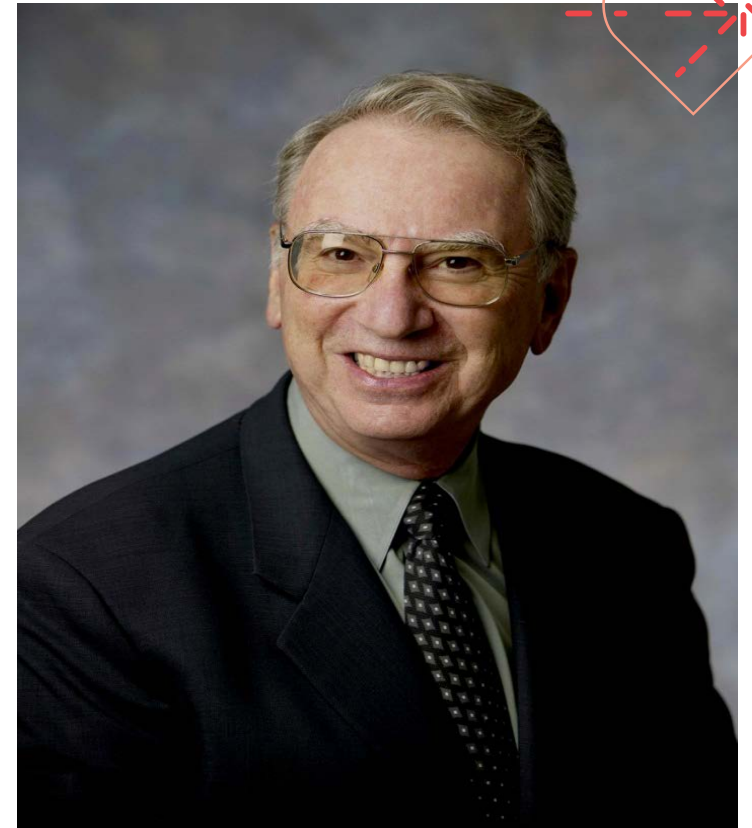


Qualcomm's Guiding Principle

“Do The Right Thing”

More than 25 years ago, our founder Dr. Irwin M. Jacobs declared that whatever the endeavor, Qualcomm should always strive to “do the right thing.”

That opportunity to make a difference in the world is a principle that continues to guide us today.



Employees & Locations

- Over 25,000 employees
- ~150 worldwide locations
- 65% engineers!
- Employee Growth:
 - Total employee base has grown 90% over the last 5 years
 - International employee base has grown 310% in the same period



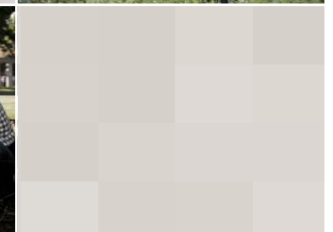
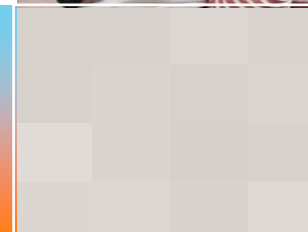
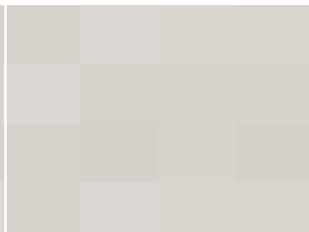
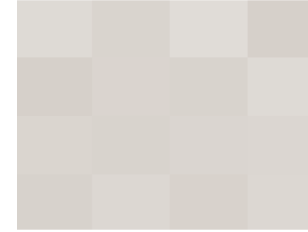
Qualcomm Key Honors

- Fortune “100 Best Companies to Work For” – 14 years in a row
- Fortune 500 Company
- Fortune Employer of Choice - 11 years in a row
- Fortune Most Diverse List
- “100 Best Managed Companies” - Industry Week
- Top 125 Training Organizations - *Training Magazine*
- Top Ten Best Employers in Korea - Since 2007
- Top 25 Best Employers in India - Since 2007
- Member of the S&P 100 & 500 Indexes
- Revenues - \$14.96 Billion (FY11)



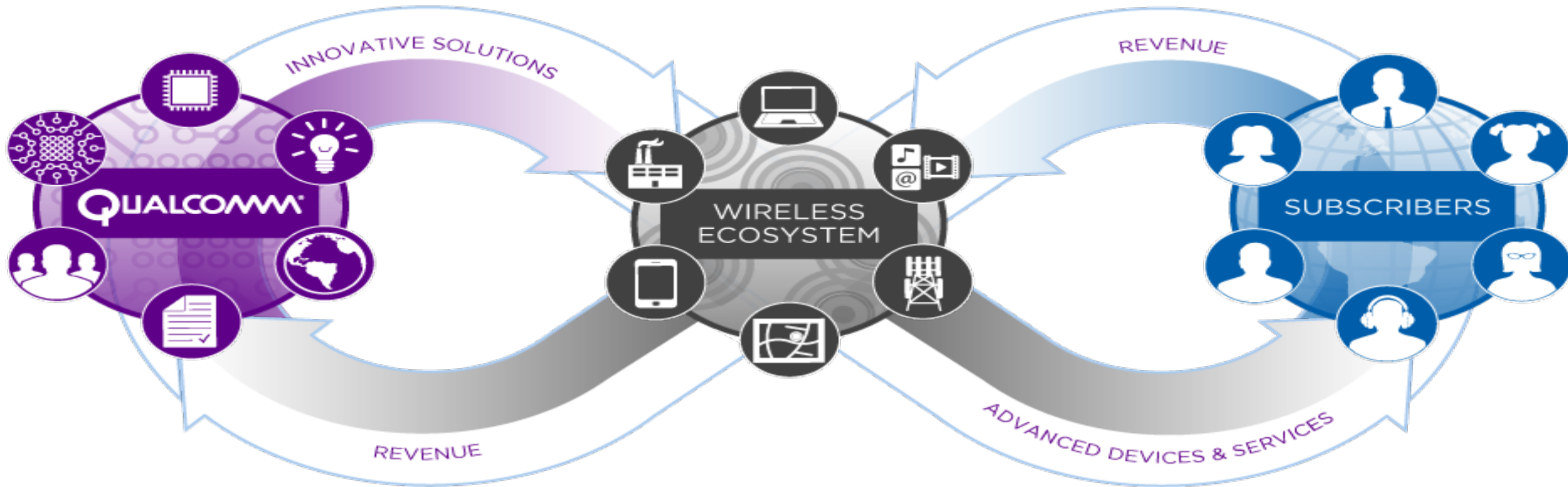
Qualcomm is a World Leader in Next-generation Mobile Technologies

- Celebrating more than 25 years of driving the evolution of wireless communications
- Making wireless more personal, affordable & accessible to people everywhere
- World's largest fabless semiconductor company, #1 in wireless
- S&P 100 / S&P 500 / Fortune 500



Qualcomm's Unique Business Model

A technology enabler for the entire mobile value chain



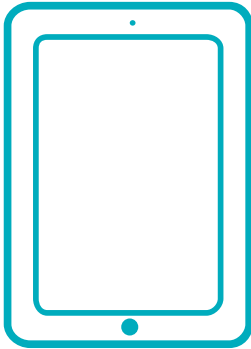
Expanding the Wireless Ecosystem



Current Areas of Focus



Drive smartphone
growth and innovation



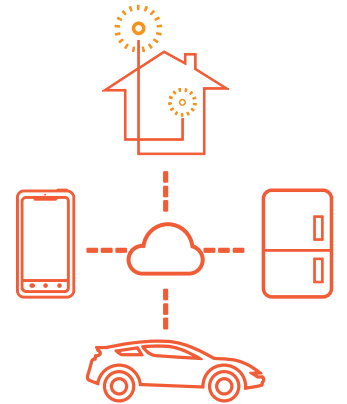
Create new mobile
computing
opportunities



Enable growth
in emerging regions

1000X

Solve the 1000x
data challenge



Deliver the Internet of
Everything

Engines for Growth



QTL

Technology
Licensing

A leader in Licensing Wireless
Technologies



QMC

Mobile
Computing

World's Largest Fabless
Semiconductor Company



QWI

Wireless and
Internet

Wireless Data Applications
and Services

Qualcomm Mobile Computing

Our chipsets connect and power leading devices
with integrated and discrete 3G, 4G/LTE and Multi-Mode



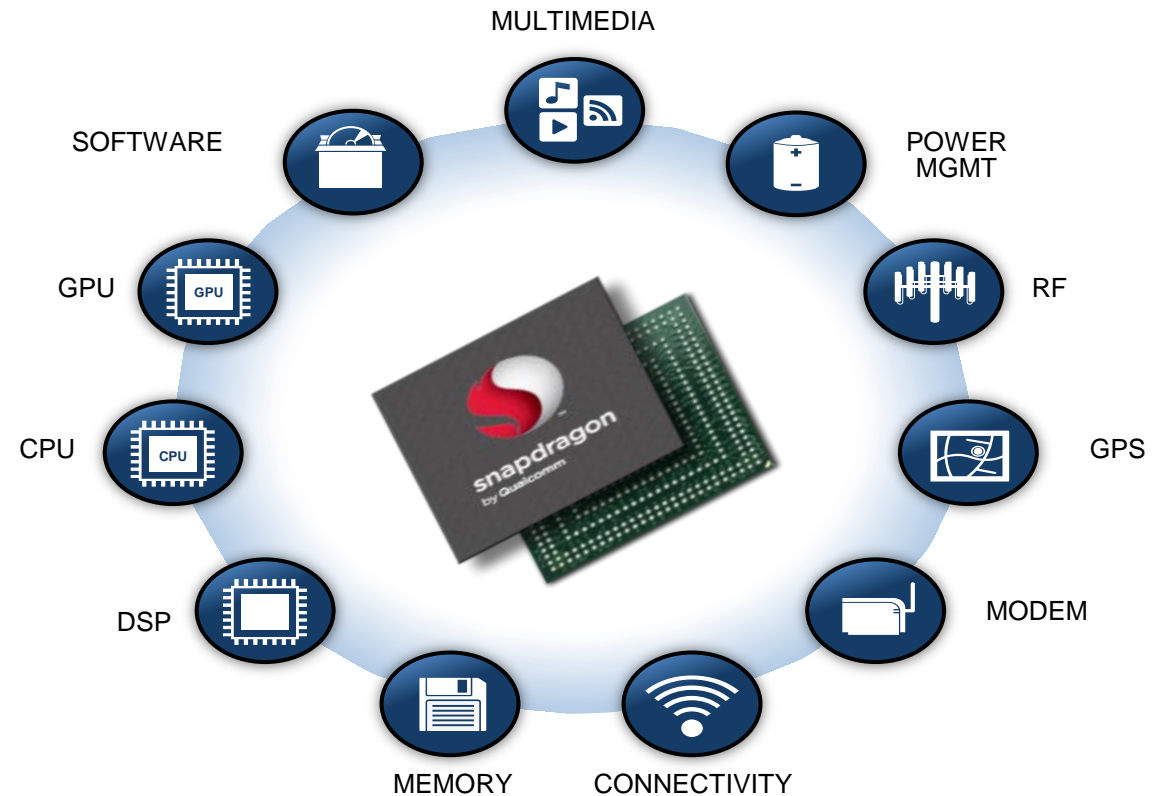


Do more, recharge less.

Everything built into a single chip.

Snapdragon's smart integration delivers:

- Uncompromised power and performance
- Optimized battery life
- Faster and more reliable connectivity
- Smaller, slimmer devices



Taking the Mobile Internet to the Next Level

Snapdragon enables a new generation of smart devices



**ALWAYS-ON
CONNECTIVITY**



**ALL-DAY
BATTERY LIFE**



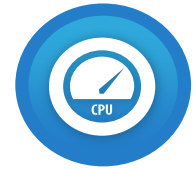
INSTANT ON



**LOCATION
AWARE**



**MULTIMEDIA
PERFORMANCE**



**UNPRECEDENTED
POWER & SPEED**



Addressing Data Demand Growth

- Evolve 3G to increase capacity and performance
- Free up 2G spectrum for more efficient 3G
- Boost data capacity with LTE for new and wider spectrum
- Bring network closer to the user
 - add small cells like femtocells



Leading the Transition to Next-gen Networks

QUALCOMM IS THE INDUSTRY LEADER IN BOTH 3G AND 4G TECHNOLOGY

LTE + 3G

Boosts Data Capacity in Dense Urban Areas

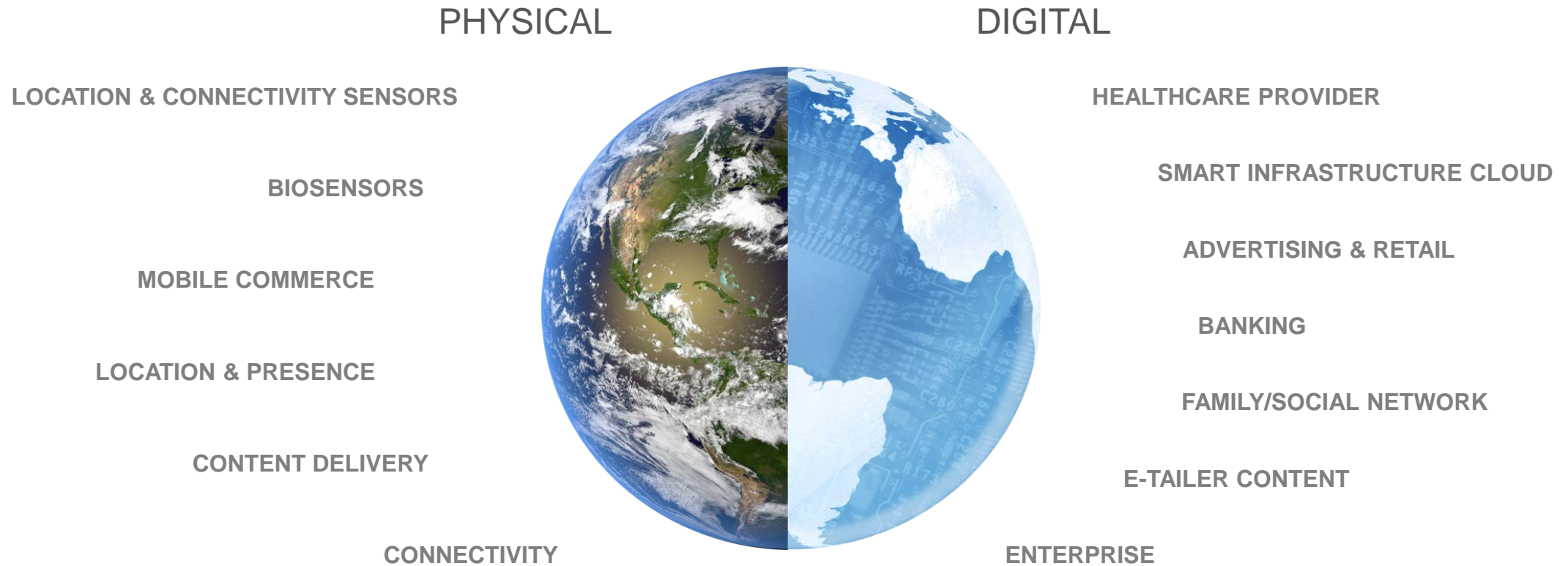
3G

Ensures Similar User Experience Outside LTE Coverage

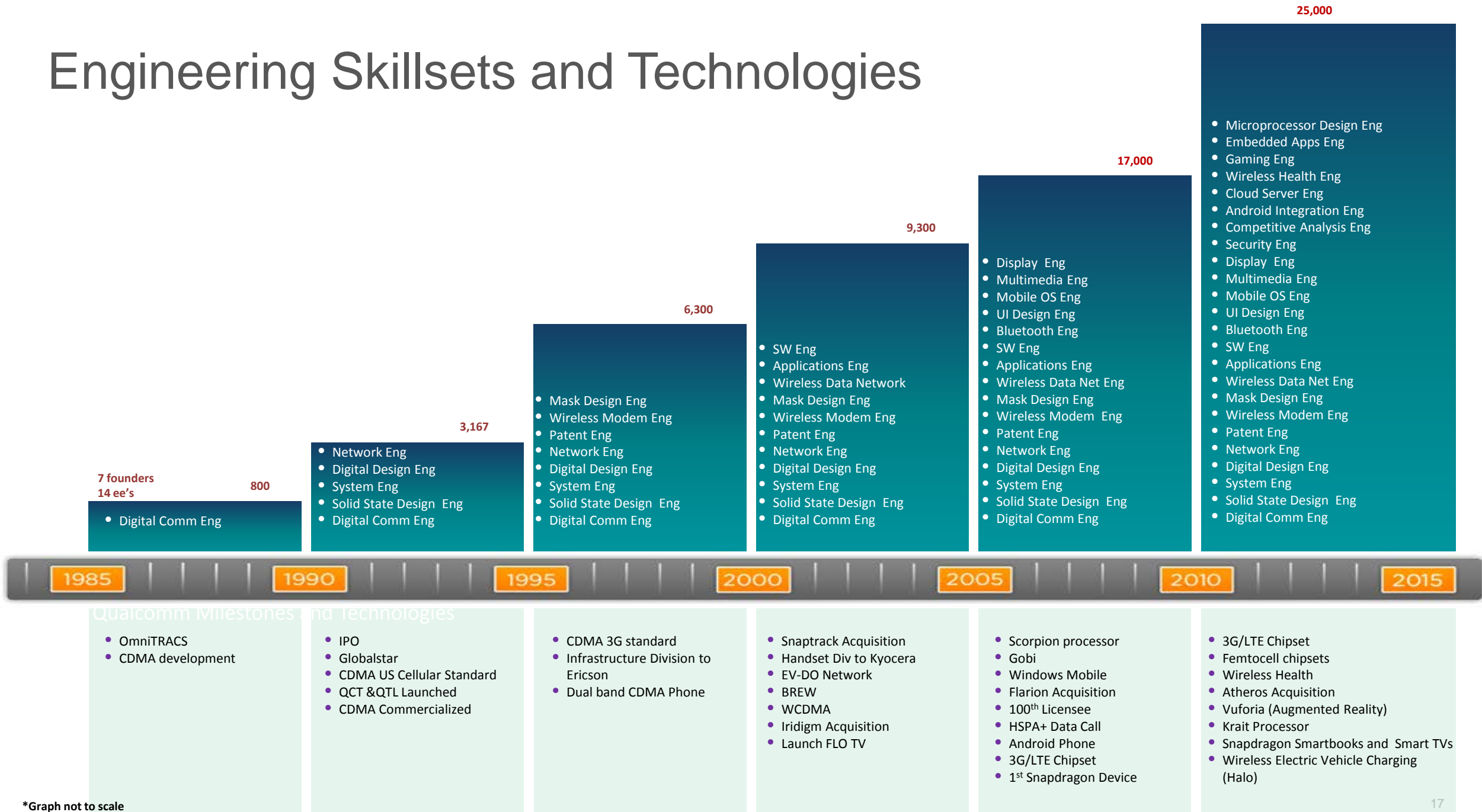


Bridging the Barrier Between the Physical and Digital Worlds

YOUR PHONE WILL BE YOUR INTERMEDIARY BETWEEN
THE PHYSICAL & DIGITAL WORLDS



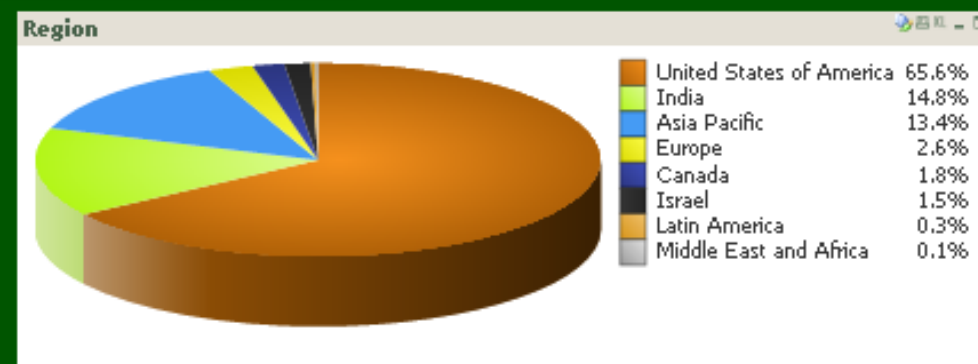
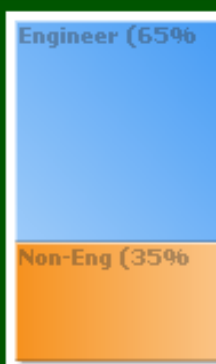
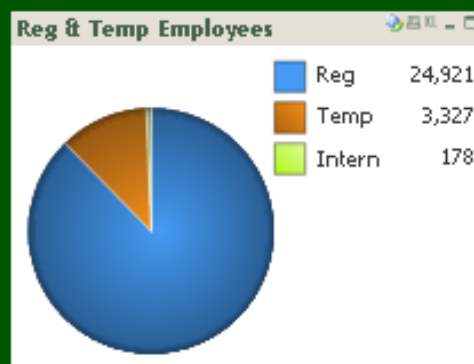
Engineering Skillsets and Technologies



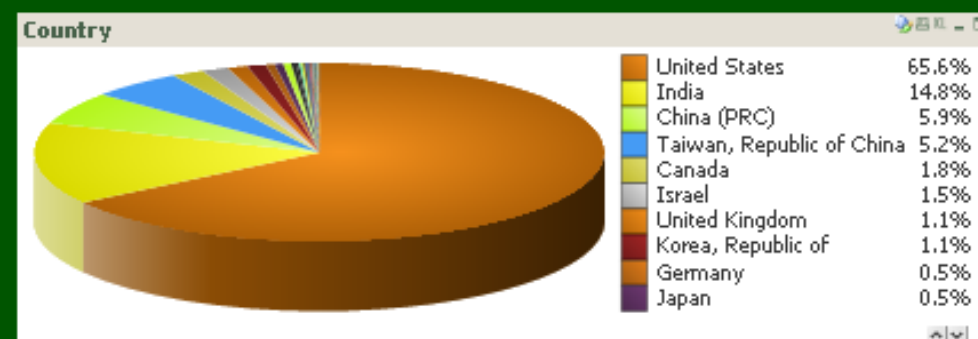
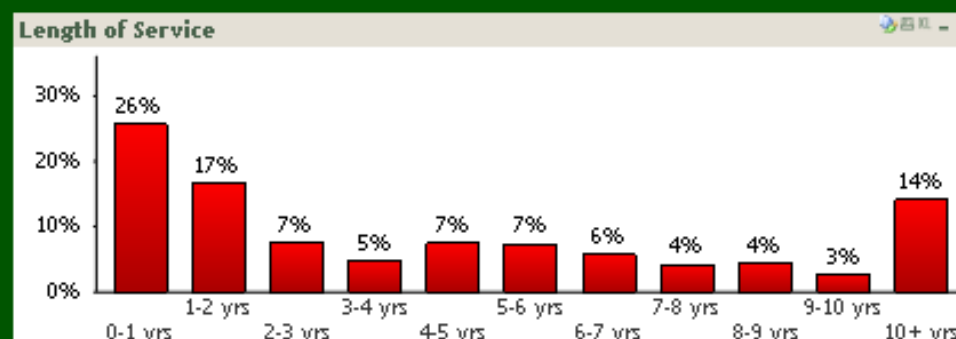
*Graph not to scale

Approximate population of Qualcomm

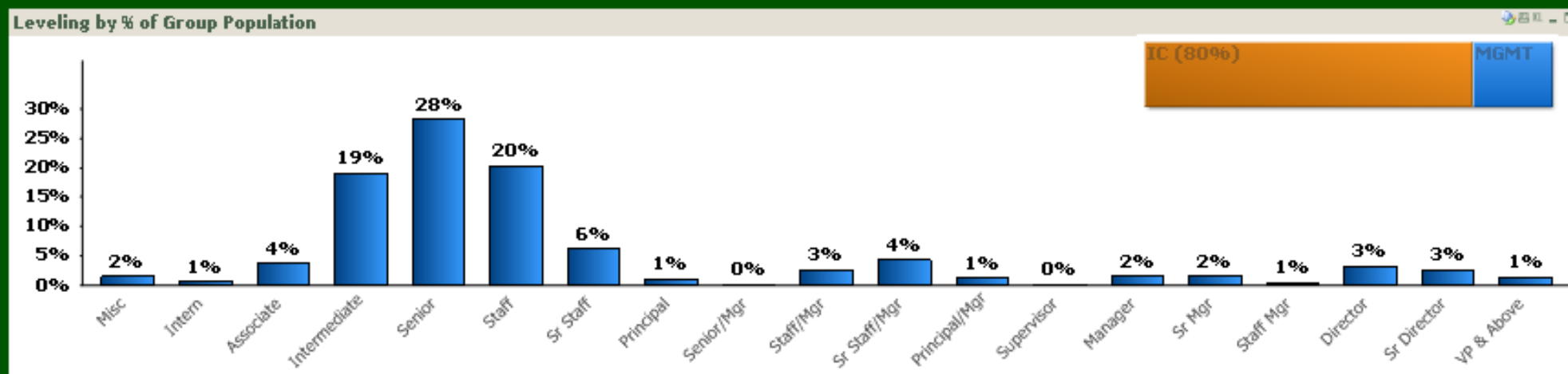
Job Function	Count
Engineering	16,351
Temporary Engineers	2,133
IT	1,699
Administrative	841
Engineering Support	780
Sales	690
Finance	613
Technicians	548
Program Mgt	521
Miscellaneous	454
Executive	410
Total	28,426



Job Family	Count
Software	6,800
ASICS	2,979
Hardware	2,498
Engineer - Temporary	1,988
Systems	1,912
Systems Test	1,038
ITI Engineers	507
Direct Labor	434
Program Manager	427
Business Development	343
Total	28,426



Level	Count
Misc	448
Intern	182
Associate	1,057
Intermediate	5,424
Senior	7,957
Staff	5,742
Sr Staff	1,785
Principal	273
Senior/Mgr	28
Staff/Mgr	751
Sr Staff/Mgr	1,254
Principal/Mgr	363
Supervisor	69
Manager	431
Total	28,426



Thank you

Follow us on:  

For more information on Qualcomm, visit us at:
www.qualcomm.com & www.qualcomm.com/blog

Qualcomm is a trademark of Qualcomm Incorporated, registered in the United States and other countries.
Other products and brand names may be trademarks or registered trademarks of their respective owners

